

MicroMac's



BBDAR Tool is a robust and user-friendly application that makes it possible for bank and other financial institutions to meet Bangladesh Bank Enterprise Data Warehouse requirements

Bangladesh Bank Data Warehouse Reporting Tool

www.mmtvbd.com

BDDAWAR Tool: Bangladesh Bank Data Warehouse Reporting Tool

In order to automate submission of information, standardize definitions used throughout the bank and reduce redundancies in information submission, Bangladesh Bank has taken the initiative to implement an Enterprise Data Warehouse (EDW). In this context MicroMac Techno Valley Ltd. has developed an application BDDAWAR Tool to simplify the process of entry and management of data to generate and submit the CSV files to meet Bangladesh Bank requirements.

FEATURES

Web Based Application

BDDAWAR Tool is a complete web based application. The system needs only be installed on the server placing minimal requirements on the end user workstation. This makes maintaining and updating the system much simpler as usually it can all be done on the server. Any client updates can be deployed via the web server with relative ease.

A Complete CMS

Easily adopt Bangladesh Bank new/upcoming requirements as the application is a complete Content Management System (CMS). Once BDDAWAR Tool set up, it's much more likely to add more templates or edit the existing templates because it's now so much easier. The result is a much more robust application with more control.

BDDAWAR Tool is a robust and user-friendly application that makes it possible for bank and other financial institutions to meet Bangladesh Bank Enterprise Data Warehouse (EDW) requirements

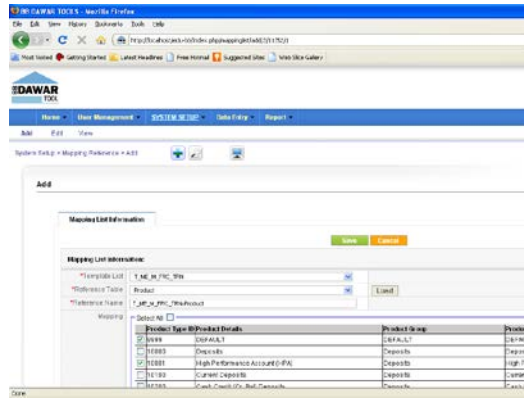
Reference Data Upload

BDDAWAR Tool can import reference data (bulk data also) of Enterprise Data Warehouse (EDW) provided by Bangladesh Bank. BDDAWAR Tool supports both full and incremental load to ensure the highest level of performance. Incremental load captures only the relevant source data changes that have happened since the last load. Besides import there is also option to entry reference data. By default the following reference file are uploaded to the system:

- Account Size Range
- Advance Range Code
- Aging Range
- AID Type
- Banking Class
- Bill Type
- Collateral
- Commodity
- Country
- Currency
- Deposit Range Code
- Economic Purpose
- Economic Sector
- FI (Financial Institute) Branches
- FI (Financial Institute)
- Frequency Indicator
- Geographic
- Industry Scale
- Loan Classification
- ME COA
- Mode of Repayment
- Product
- PS COA
- Schedule Code
- Security
- SME Type

Mapping Reference Data

BDDAWAR Tool has the option of mapping reference data template wise. For example, Product reference file has 428 product codes, but the Product column of the template T_PS_M_EXPOSURE only take 90 product codes as valid data. This mapping and also the validation can be easily done by BDDAWAR Tool.

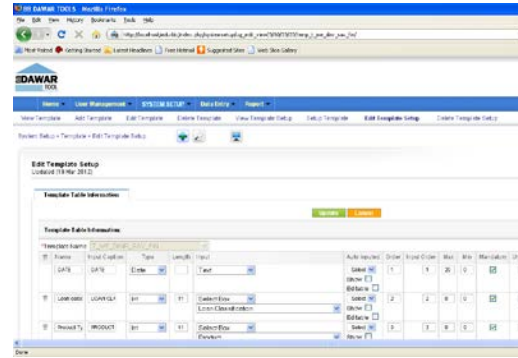


Template Creation & Setup

By default cover all the templates of EDW of Bangladesh Bank. Also have the option to create new templates as per the need. At the same there will also be option to update the setup of the existing templates.

Features include:

- Addition/Subtraction of Input Field (Column)
- Rename Input Field Caption
- Maintaining the Data Type of the Input Field
- Load Reference File to Input Field
- Define Default Value for Input Field
- Define Mandatory and Unique Input Fields
- Set the Sort Order of Input Fields
- Set the Minimum and Maximum Data Length of the Input Field
- Set the Filtering Input Fields to Generate Reports
- Maintain Import File Indexing and Mapping



Data Entry

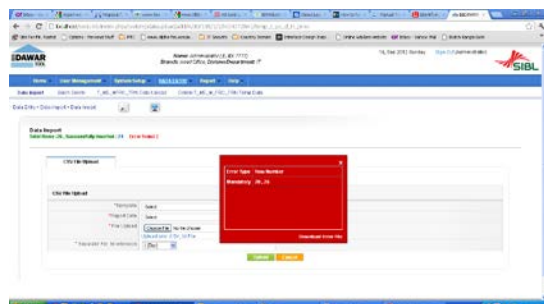
Data entry form is the common use case in BDDAWAR Tool. It displays a data entry form for each template and collects user input. If entered data is correct as per the template setup, application accepts it and displays a success message. Otherwise, application redisplay the data entry form along with relevant errors, the user fixes the errors and submits the form again.

Import Data/Batch File

BDDAWAR Tool is capable to import data or batch file from any existing system. Consider the case, a certain template provided by Central Bank may have 10 columns, and an existing application may generate 6 columns out of those 10 columns. BDDAWAR Tool has the option to edit these data to entry the rest 4 columns data. But there is a restriction to edit imported columns data. There is also option to manage mapping of data at the time of import.

Import Error Generation

BBDAR Tool imports data based on system setup and capable to find out error, if any. There is also option to generate the error log.



Legacy Data

Legacy data is data that the system already has and use. Most often, this takes the form of records in an existing database on a system in current use. BBDAR Tool can help leverage the legacy data in a variety of ways. Because BBDAR Tool stores all of its management tables, workflow tables, and user-level attribute tables in an underlying database.

CSV File Generation

Based on the entered and imported data BBDAR Tool is capable to generate the CSV as per Bangladesh Bank requirements. Besides CSV file also have the option to generate the report in PDF, EXCEL format.

Dual Control of Data

The basic concept in BBDAR Tool is "Dual Control". This means each data entry operates on a "Maker-Checker" concept. One person makes the data entry into BBDAR Tool and his supervisor checks the same. But the system has the feature to enable/disable this dual control template wise.

Template Lock and Un-Lock

Report frequency wise template can be locked and unlocked to ensure data entry in due time.

Data Validation

BBDAR Tool is capable to identify erroneous and duplicate data.

Reporting

The System is capable to generate various MIS.

Audit Trail

BBDAR will maintain audit trails for the sensitive activities by the users as functions set by the system administrator.

Archiving

BBDAR Tool is capable to archive the CSV files automatically. And also have the option to download the CSV files from the archive to reuse.

Database Backup

The System has the option to take the database backup directly from the user interface.

User Management

BBDAR has an extensive user module. Besides create/edit/delete users there will be option to set user privilege and also have the option to set user privilege template wise. Users access only the data and functions they are permitted to.

Integration with Central Bank Portal

The CSV file can send to Central Bank Portal directly from BBDAR Tool, which will help the higher management of bank to monitor that the Bangladesh Bank EDW requirements has been successfully fulfilled by the end user of the software.

About MicroMac

MicroMac Techno Valley Ltd. is one of the emergent software development firms in Bangladesh. Initiating from 2004, MicroMac is providing its services to engineer and automate business organizations through providing automation software, website design and development and adding values to the expertise of professionals by professional trainings. We are expert as well as well experienced in data entry and conversion and also engaged in IT education and ICT Research. The firm has a pool of prominent experts who are available to provide excellent services.

Contact Information

MicroMac Techno Valley Ltd.
215/A, Outer Circular Road, Baro Moghbazar, Dhaka 1217

postmaster@mmtvbd.com

+88-02-9342717
+88-01928-702702

www.mmtvbd.com
www.micromac.com.bd